

Canon

CANON SOLUTIONS AMERICA

imagePROGRAF

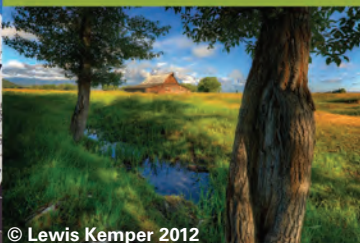
 imagePROGRAF
iPF9400/8400/6450/6400



© Lewis Kemper 2012

GRAPHIC ARTS

LARGE-FORMAT PRINTING



© Lewis Kemper 2012



The 60" iPF9400, 44" iPF8400, and 24" iPF6450/6400 large-format printers.

This expanded line-up is ideal for helping dedicated artisans and demanding graphic professionals achieve extraordinary results.

For those who expect more from a large-format printing system, Canon's line-up of 12-color, high-speed, high-resolution solutions are optimized to produce exquisite images for the Fine Art, Photography, and Proofing markets.

Color consistency across all these printers is achieved with a color management system that includes a multi-sensor, an optional Spectrophotometer unit for the iPF6450 printer, and a color calibration management utility to manage multiple printers at once.

imagePROGRAF iPF9400: This 60"-wide powerhouse system prints incredible eye-popping images, is ideal for large Giclée prints, can print **up to 60" borderless**, and includes a media take-up roll that supports long print runs.

imagePROGRAF iPF8400: This highly versatile large-format printing system delivers high-quality photo and fine art printing on media up to 44" wide. Enhancements provide exceptional quality with smooth gradations and prints at **faster** print speeds than the previous model.*

imagePROGRAF iPF6450/6400: These 12-color, 24"-wide solutions are optimal for proofing, photography, and fine art printing. The iPF6450 printer, with a built-in 250 GB hard drive, has the option to add an onboard **Spectrophotometer** (iPF6450 only), for advanced color management, including the ability to obtain color consistency across multiple iPFX400 Series printers.

* As compared to iPF9100.

imagePROGRAF

FEATURES

12-COLOR LUCIA EX INK SET

Canon's LUCIA EX ink technology offers sophisticated photographic expression with its brilliant range of vibrant colors, smooth gradations, and incredibly fine details. This ink set also has better scratch resistance and reduced bronzing than previous ink.

LARGE-CAPACITY INK TANKS WITH A SUB-INK TANK SYSTEM

The 24" printers have the capability to utilize **300ml ink tanks**, which more than double the capacity of the standard 130 ml ink tanks. The 44" and 60" printers have an option for 330 ml and 700 ml sizes! The sub-ink tank system available on these printers gives the user the ability to change tanks without stopping the print run.

CREATIVE WORKFLOW SOFTWARE SOLUTIONS

A feature has been added that can be accessed via the popular Adobe® Photoshop® program. This Plug-in gives users the ability to easily create **gallery wrap** prints for framing, and also includes creative options.

The **Adjustment Pattern Setting** feature in the Print Plug-in for Adobe Photoshop gives users the capability to choose the printed output color that most closely matches what they need.

The Color Calibration Management Console program for the **centralized management** of networked printers in a system allows users to manage, share, and **link** their color data, ensuring color consistency between printers.



© Joe Buissink 2012

MULTI-SENSOR

A multi-sensor has been incorporated into these iPF models for improved density detection accuracy over the previous printers.* The sensor, along with the included software, will help achieve color **consistency** across all these iPF 12-color models.

FASTER PRINT SPEEDS

All imagePROGRAF printers are engineered with speed in mind. While improving image quality, the speed of all the iPF 12-color printers has been increased, providing a shorter print time and increasing production while maintaining **exceptional print quality**.

OPTIONAL SU-21 SPECTROPHOTOMETER FOR iPF6450 PRINTER

Create proofs with confidence and improve efficiency by automating your color management workflow.



* As compared to iPFX300 and iPFX100 Series.

COLOR QUALITY

Canon's LUCIA EX ink set, available across the 24", 44", and 60" models, is designed for dramatic photographic expression as well as detailed color reproduction for exacting proofing applications. This ink offers a brilliant range of vibrant colors, smooth gradients, and incredibly fine details. This specially formulated ink also offers better scratch resistance, **superb black reproduction**, and exceptional color stability compared to its predecessor.

Increased image manipulation options have been added to the included software, giving users the ability to be even more creative in their final output. **Tint and Tone** controls over the four monochromatic shades allow users to create even more expressive blacks with smoother gradations, especially in dark areas. For discriminating photographers who realize that their carefully crafted input is only a part of the final output, Canon supplies them with seamless **Input-to-Output** solutions. The included Print Plug-ins for Adobe Photoshop and Digital Photo Professional enable 16-bit image processing to dramatically improve the final output. Canon's two advanced, one-inch print-heads output a superfine 4pl ink droplet at up to a full 2400 x 1200 dpi resolution to help reproduce details with superior accuracy and clarity.



© Adam Jones 2012



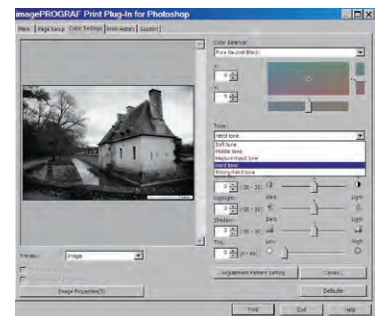
© Eric Meola 2012

ADJUSTMENT SETTINGS

Controls have been added to the Printer Driver and the Print Plug-in for Photoshop to give users increased control over their output. The Tone control in the **monochrome photo mode** includes adjustments for the following:

- Soft Tone
- Middle Tone
- Medium Hard Tone
- Hard Tone
- Strong Hard Tone

A preview is available showing how the image is being changed.



Tint control has been added to the Print Plug-in for Photoshop. This option gives users the ability to affect the white space on an image to improve gloss control of a black-and-white image.

ENHANCED PROCESSING SPEEDS

The printing process for printing on glossy and proofing paper is now optimized for faster output while maintaining high print quality. In the Highest quality mode, the printing speed has been approximately **doubled** compared with that of previous models, and approximately 10% faster in other modes.

PRINT QUALITY

COLOR ACCURACY

Color Accuracy refers to a device's ability to not only reproduce colors the same way every time, but also ensure that the color's output is, in fact, the color that's required in the image. The imagePROGRAF 12-color printers include an upgraded, built-in multi-sensor designed to offer even more precise **calibration and color matching**. Automatic color calibration is finished quickly after a few simple steps on the printer's operation panel. A single color calibration performed with one type of media can be applied to media in all printing modes.

COLOR CONSISTENCY

Color Consistency is a device's ability to produce and reproduce colors without a shift or change in tone, hue, or density. An image printed on a device that's producing colors consistently will always look the same any time that image is printed on that device on the same media in the same mode. Canon includes the **multi-sensor** to help ensure color accuracy and consistency for a single printer when more than one is being used in a printing environment.



iPF6450 Printer with Optional SU-21 Spectrophotometer

OPTIONAL SPECTROPHOTOMETER FOR iPF6450

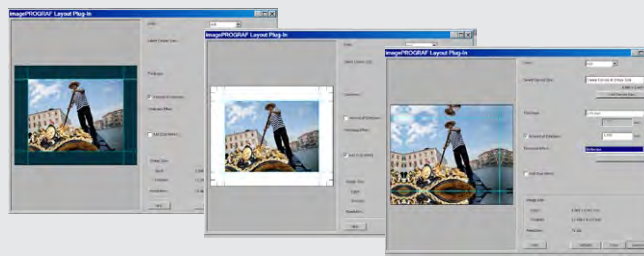
As an optional add-on to the **iPF6450** printer, the SU-21 spectrophotometer is essential for anyone who's looking for efficiency in the proofing industry. This easy-to-install solution attaches onto the front of the iPF6450 printer and provides the foundation for an advanced color management system.

The SU-21 spectrophotometer device includes:

- A fully automated **mobile carriage** for the sensor, allowing for media of different thicknesses to be loaded and used with this device.
- A **single-piece** backing plate that's unique to Canon's device and has a black and a white side on it.
- User-switchable **UV blocking filter** that can be switched on and off according to paper type; no need to purchase individual sensors for each stock.
- Scan speed of **10 inches per second**.
- The ability to generate color calibration charts is possible for **third-party-media**, allowing users to expand their workflow options.
- Conforms to 2010 **XRGA** measurement standard.

COLOR CALIBRATION MANAGEMENT CONSOLE

The Color Calibration Management Console (CCMC) allows for centralized management of networked printers in a system from one easy-to-use software tool. This **unique** feature enables color calibration targets created using the iPF6450 printer with the optional SU-21 spectrophotometer that can be **linked** across the entire line of new 12-color imagePROGRAF devices. A printer's administrator can monitor and manage each printer from a remote location. **Linking color calibration** targets among multiple printers allows color calibration for custom media to be performed on printers not equipped with a SU-21 spectrophotometer unit.



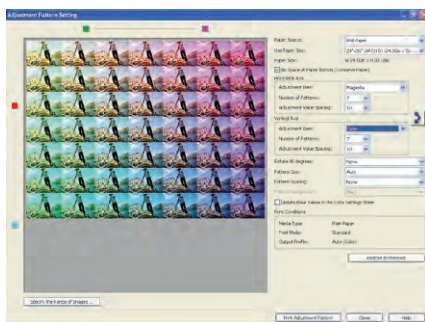
New Gallery Wrap Feature

CREATIVE AND WORKFLOW SOLUTIONS *IN THE BOX*

SOFTWARE SOLUTIONS

Canon includes innovative software that will help you expand your creative process as well as manage your printing process, resulting in beautiful output with an eye on the bottom line.

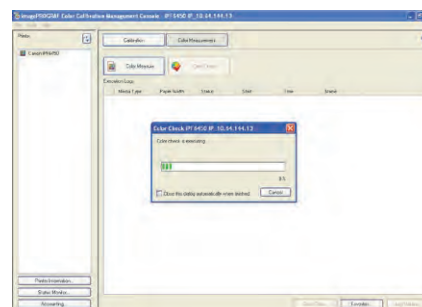
- **Print Plug-in for Adobe Photoshop:** Expands creative and processing options for the photographic professional—for **higher quality** levels than what the traditional printer driver can offer.
 - **Gallery Wrap Feature:** This feature not only gives users the ability to easily create **gallery wrap** prints for framing, but also includes creative options that will expand output possibilities.
 - **Adjustment Pattern Setting:** Print multiple versions of an image with different color settings in order to choose the color that most closely **matches** what you need.
- **Print Plug-in for Microsoft Office (PC only):** Print posters, spreadsheets, and banners **quickly** and **easily** directly from Microsoft® Excel, PowerPoint®, and Word® applications.
- **Free Layout Tool:** Edit the placement and scaling of files and be able to group and print files from different applications as a **single job**, right from the Printer Driver—no third-party software is needed!
- **PosterArtist Lite (PC only):*** Use this template-driven poster creation software to create **professional posters**, banners, and signage in just four easy steps!
- **Media Configuration Tool:** Allows for new Canon and **custom** media profiles to be imported into the printer, giving users more flexibility in media choices.



Adjustment Pattern Setting

- **Color Calibration Management Console:** The Color Calibration Management Console program allows for the **centralized management** of networked printers in a system, allowing users to manage, share, and **link** their color data and ensuring color consistency between printers.
- **Accounting Manager (PC only):** Allows users to track and calculate your **printing costs** to help minimize waste and maximize profits.

- **Print Plug-in for Digital Photo Professional:** Software designed specifically for your **Canon camera** to help bring your professional photo production to the next level with the ability to work with RAW files.
- **Remote User Interface:** Have the ability to remotely access your iPF printer and receive any **notifications**, as well as check on the printer's status and diagnose problems.



Color Calibration Management Console

imagePROGRAF

SPECIFICATIONS



Print-Heads

PF-05 (2)

Technology

FINE (Full-photolithography Ink-jet Nozzle Engineering)

Print Resolution (Max.)

Up to 2400 x 1200 dpi

Ink Type

LUCIA EX Ink (Pigment-based)

Ink Tank

PFI-106 (130 ml): BK, MBK, C, M, Y, PC,
PM, GY, PGY, R, G, B
PFI-206 (300 ml): BK, MBK, C, M, Y, PC,
PM, GY, PGY, R, G, B

Colors

Cyan, Photo Cyan, Magenta, Photo Magenta,
Yellow, Black, Matte Black, Gray, Photo Gray, Red,
Green, Blue

Ink Tank Shipped with Printer

12 Colors (90 ml Starter Tank Each Color)

Hard Disk Capacity

iPF6450: 250 GB

iPF6400: N/A

Printer Memory

384 MB

Media Feed

Top-loading Roll Feed

One Roll, Front Output

Top-loading Manual Feed

One Sheet, Front Output

Front-loading Manual Feed

One Sheet, Front Output

Media Width

8" – 24" (Cut Sheet and Roll)

Minimum Media Length

Top-loading Roll Feed

8" (203 mm)

Top-loading Manual Feed

11.0" (279 mm)

Front-loading Manual Feed

13.8" (350 mm)

Maximum Print Length

Manual Feed

63" (1.6 m)

Roll Feed

59" (18 m)*

Front-Loading Manual Feed

36" (914 mm)

Borderless Printing Widths (Roll Media Only)

10"/14"/16"/17"/24"/B4 [9.84"(250 mm)]/

A2 [16.54"(420 mm)]/ B2 [20.28"(515 mm)]/

A1 [23.38"(594 mm)]

Printer Stand

Standard

Media Thickness

Top-loading Manual Feed

0.07 mm - 0.8 mm (2.8 mil - 31.4 mil)

Front-loading Manual Feed

0.5 mm - 1.5 mm (19.6 mil - 59.0 mil)

Top-loading Roll Feed

0.07 mm - 0.8 mm (2.8 mil - 31.4 mil)

Media Core Sizes

2" or 3" Core (with Supplied Adapter)

Printable Margins

Manual Feed (Top/Front)

Leading and Left/Right Edges: 0.12" (3 mm)

Trailing Edge, Front Feed: 0.90" (23 mm)

Trailing Edge, Top Feed: 0.12" (3 mm) Except

Art Paper 0.90" (23 mm)

Roll Feed, All Sides: 0.12" (3 mm) or 0" for Borderless

Maximum Media Roll Outer Diameter

5.9" (150 mm)

Bundled Software

Printing Software

Canon Printer Driver, Print Plug-in for Photoshop,**

Print Plug-in for DPP,*** Printer Driver Extra Kit

(Free Layout, imageRUNNER Linking Function),

Print Plug-in for Microsoft Office

Applications

PosterArtist Lite

Utilities

imagePROGRAF Status Monitor (Windows),

Print Monitor (Macintosh), Media Configuration

Tool, Remote UI, Accounting Manager, Color

Calibration Management Console

Printer Language

GARO (Canon Proprietary)

Operating System*

Windows XP (32/64-bit), Server 2003 (32/64-bit),

Server 2008 (32/64-bit), Windows Vista® (32/64-bit),

Windows 7 (32/64-bit); Macintosh® OS X

10.5.8 - 10.7.x

Interface

Standard

USB 2.0 High-Speed

10/100/1000Base-T/TX

Acoustic Noise

Operation 47 dB or Less

Power Supply

AC 100-240 V (50-60 Hz)

Power Consumption

Maximum

100 W or Less

Standby (100-120 V)

6 W or Less

Power Off

.5 W or Less (compliant with executive order)

Certifications

UL, FCC Class B, ENERGY STAR®

Operational Environment

Temperature

59 – 86 F° (15 – 30 C°)

Relative Humidity

10 – 80% (No Condensation)

Dimensions

iPF6450/iPF6400 Printer and Stand (H x W x D)

39.4" x 48.3" x 27.6"

iPF6450 Printer with optional SU-21 Spectrophotometer installed

(H x W x D)

39.4" x 48.3" x 34.3"

Weight

iPF6450/iPF6400 Printer

Approx. 154 lb.

iPF6450 Printer with optional SU-21 Spectrophotometer installed

Approx. 200 lb.

User-Replaceable Items

Print-Head (PF-05)

Maintenance Cartridge (MC-16)

Options

Roll Holder Set RH2-25

PosterArtist (PC Only)

Optional SU-21 Spectrophotometer for iPF6450

Model

X-Rite SU-21

Color Measurement Width

480 mm

Max. Media Thickness

0.50 mm

XRGA Compliant

Yes

ISO 13655 Compliant

Yes

User Switchable UV Filter

Yes

White/Black Backing

Included on One Strip

Support for Third-party RIPs

Most Leading Third-party RIPs

* The maximum printable length varies depending on the application, OS, and RIP used. The maximum printable length from Canon Printer Driver is 50 feet.

** For Adobe Photoshop 6, 7, CS, CS2, CS3, CS4 running on Windows 2000/XP/Windows Vista (32 bit)/Windows 7 or Macintosh OS X 10.2/10.3/10.4/10.5/10.6.

*** For Digital Photo Professional version 2.1 or later running on Windows 2000/XP/Windows Vista (32 bit)/Windows 7 or Macintosh OS X 10.2/10.3/10.4/10.5/10.6.

■ For imagePROGRAF Printer Driver. For printing from PostScript® applications such as Adobe Illustrator® or QuarkXPress®, please use a PostScript compatible RIP package. For a list of Canon recommended RIP packages, please consult with Canon Alliance and Industry Market program list of RIP vendors.

imagePROGRAF

SPECIFICATIONS



Print-Heads

PF-05 (2)

Technology

FINE (Full-photolithography Ink-jet Nozzle Engineering)

Print Resolution (Max.)

Up to 2400 x 1200 dpi

Ink Type

LUCIA EX Ink (Pigment-based)

Ink Tank

PFI-306 (330 ml): BK, MBK, C, M, Y, PC,
PM, GY, PGY, R, G, B
PFI-706 (700 ml): BK, MBK, C, M, Y, PC,
PM, GY, PGY, R, G, B

Colors

Cyan, Photo Cyan, Magenta, Photo Magenta,
Yellow, Black, Matte Black, Gray, Photo Gray, Red,
Green, Blue

Ink Tank Shipped with Printer

12 Colors (Full 330 ml Each Color)

Hard Disk Capacity

250 GB

Printer Memory

iPF9400

640 MB

iPF8400

384 MB

Media Feed

Front-loading Roll Feed

One Roll, Front Output

Front-loading Manual Feed

One Sheet, Front Output

Media Width

iPF9400

Cut Sheet: 8" – 60"

Roll Feed: 10" – 60"

iPF8400

Cut Sheet: 8" – 44"

Roll Feed: 10" – 44"

Minimum Media Length

8" (203 mm)

Maximum Print Length

Manual Feed

5.2' (1.6 m)

Roll Feed

59' (18 m)*

Borderless Printing Widths (Roll Media Only)

iPF9400

10"/14"/17"/24"/36"/42"/44"/50"/60"/
B2 [20.28"(565 mm)]/A1 [23.38"(594 mm)]/
A0 [33.11"/841 mm]/B0 [40.55"(1030 mm)]

iPF8400

10"/14"/17"/24"/36"/42"/44"/B2 [20.28"(565 mm)]/
A1 [23.38"(594 mm)]/ A0 [33.11"/841 mm]/
B0 [40.55"(1030 mm)]

Printer Stand

Standard

Media Thickness

Front-loading Manual Feed

0.07 mm – 0.8 mm (2.8 mil – 31.4 mil)

Front-loading Roll Feed

0.07 mm – 0.8 mm (2.8 mil – 31.4 mil)

Media Core Sizes

2" or 3" Core (with Supplied Adapter)

Printable Margins

Manual Feed (Front)

Leading and Left/Right Edges: 0.20" (5 mm)
Trailing Edge: 0.90" (23 mm)

Roll Feed

All Sides: 0.20" (5 mm) or 0" for Borderless

Maximum Media Roll Outer Diameter

5.9" (150 mm)

Bundled Software

Printing Software

Canon Printer Driver, Print Plug-in for Photoshop,**
Print Plug-in for DPP***, Printer Driver Extra Kit
(Free Layout, imageRUNNER® Linking Function),
Print Plug-in for Microsoft Office

Applications

PosterArtist Lite (iPF8400 only)

Utilities

imagePROGRAF Status Monitor (Windows®),
Print Monitor (Macintosh®), Media Configuration
Tool, Remote UI, Accounting Manager, Color
Calibration Management Console

Printer Language

GARO (Canon Proprietary)

Operating System*

Windows XP (32/64-bit), Server 2003 (32/64-bit),
Server 2008 (32/64-bit), Windows Vista® (32/64-bit),
Windows 7 (32/64-bit); Macintosh® OS X
10.5.8 – 10.7.x

Interface

Standard

USB 2.0 High-Speed
10/100/1000Base-T/TX

Acoustic Noise

iPF9400: Operation 68 dB or Less

iPF8400: Operation 50 dB or Less

Power Supply

AC 100-240 V (50-60 Hz)

Power Consumption

Maximum

190 W or Less

Standby (100-120 V)

5 W or Less

Power Off

.5 W or Less (compliant with
executive order)

Certifications

UL, FCC Class B, ENERGY STAR®

Operational Environment

Temperature

59 – 86 F° (15 – 30 C°)

Relative Humidity

10 – 80% (No Condensation)

Dimensions with Stand (H x W x D)1

iPF9400: 45" x 90.5" x 30.2"

iPF8400: 45" x 74.5" x 38.4"

Weight

iPF9400: Approx. 362 lb.

iPF8400: Approx. 316 lb.

User-Replaceable Items

Print-Head (PF-05)

Maintenance Cartridge (MC-08)

Options

iPF9400

Roll Holder Set RH2-6

Basket BU-01

PosterArtist (PC only)

iPF8400

Roll Holder Set RH2-44

Take Up Unit TU-06

PosterArtist (PC only)

- * The maximum printable length varies depending on the application, OS, and RIP used. The maximum printable length from Canon Printer Driver is 50 feet.
- ** For Adobe Photoshop 6, 7, CS, CS2, CS3, CS4 running on Windows 2000/XP/Windows Vista (32 bit)/Windows 7 or Macintosh OS X 10.2/10.3/10.4/10.5/10.6.
- *** For Digital Photo Professional version 2.1 or later running on Windows 2000/XP/Windows Vista (32 bit)/Windows 7 or Macintosh OS X 10.2/10.3/10.4/10.5/10.6.
- For imagePROGRAF Printer Driver. For printing from PostScript® applications such as Adobe Illustrator® or QuarkXPress®, please use a PostScript compatible RIP package. For a list of Canon recommended RIP packages, please consult with Canon Alliance and Industry Market program list of RIP vendors.

Utilize the imagePROGRAF Printers to their full potential with professional services from Canon Solutions America

When selecting and implementing new technology, a highly skilled technical team is the difference-maker for a successful deployment. Canon Solutions America has the team of experts you need to help you acquire the right technology, solutions, and services for your organization. Our team of technical professionals draws upon decades of technical expertise and real-world experience to ensure you obtain the maximum benefit from your technology investment.

As an ENERGY STAR® Partner, Canon U.S.A., Inc. has qualified these models as meeting the ENERGY STAR® energy efficiency criteria through an EPA recognized certification body. ENERGY STAR and the ENERGY STAR mark are registered U.S. marks. Canon, imagePROGRAF, imageRUNNER, LUCIA, and the GENUINE logo are registered trademarks of Canon Inc. in the United States and may also be registered trademarks or trademarks in other countries. All other referenced product names and marks are trademarks of their respective owners. Specifications and availability subject to change without notice. All output images and effects are simulated. Not responsible for typographical errors.
©2014 Canon U.S.A., Inc. All rights reserved.

CSA-9/14-220
1014-CSAiPFX400-PDF-IH



Canon

CANON SOLUTIONS AMERICA

Canon Solutions America, Inc.

One Canon Park
Melville, NY 11747

1.800.815.4000
csa.canon.com